

## Installing the SkySensor 2000 EPROMs

Note: All user defined settings and setup parameters will be cleared when changing the EPROM. Before starting, normal precautions should be taken to guard against damages from static electricity. (Connect yourself to a ground, or at least touch a grounded object before you start.)

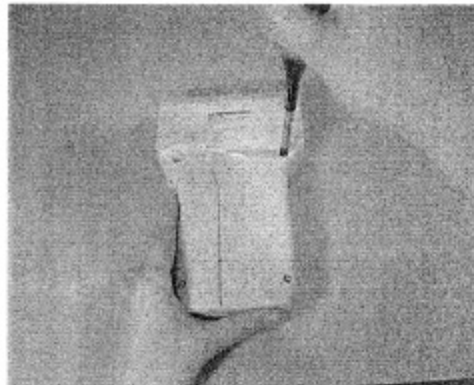
1. You will need the following items.

- SkySensor 2000 Controller
- The new EPROM
- A Phillips screwdriver
- A flat screwdriver

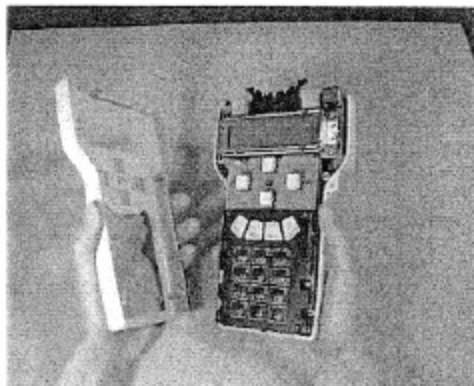
Use a piece of aluminum foil for placing the EPROM to protect against static electricity.



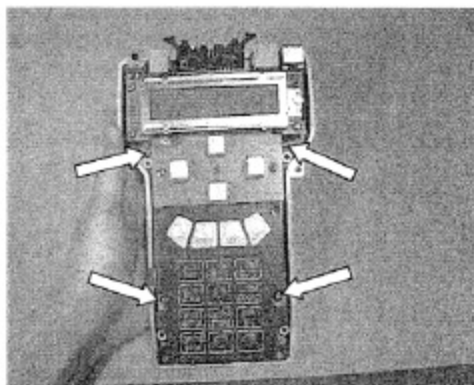
2. Remove four screws from the back of the controller case using the Phillips screwdriver.



3. Remove the front cover.

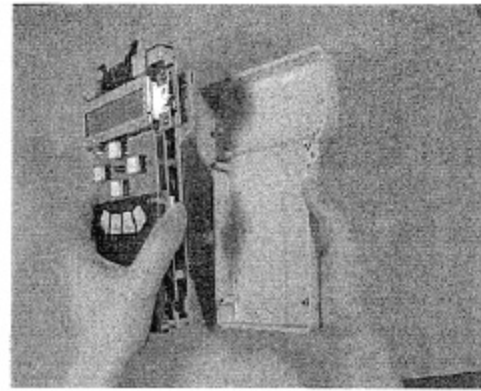


4. Remove four tap screws at the positions indicated on the illustration using the Phillips screwdriver. The two upper screws are short screws located in the recessed area near the curved side.



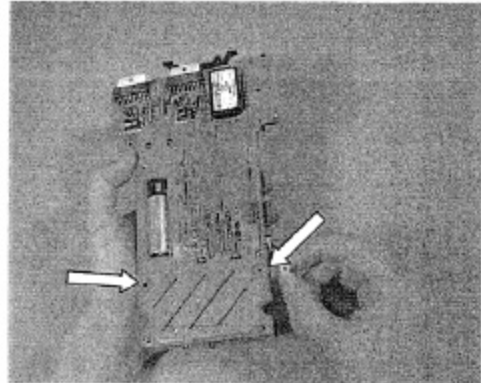
5. The circuit board will now come completely off the case.

**CAUTION:** Do not place the circuit board on metal or other conducting surfaces, or damage due to short circuit may result.

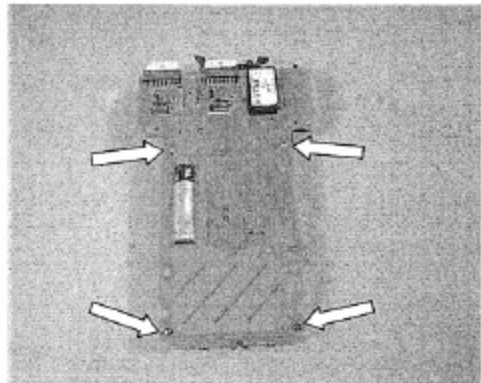


6. There are two white plastic spacers between the boards at the positions indicated on the illustration. Pull them off and set them aside.

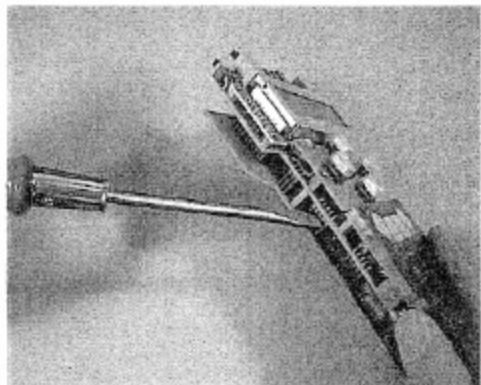
(You may have to loosen the screws in step 7 to loosen the spacers.)



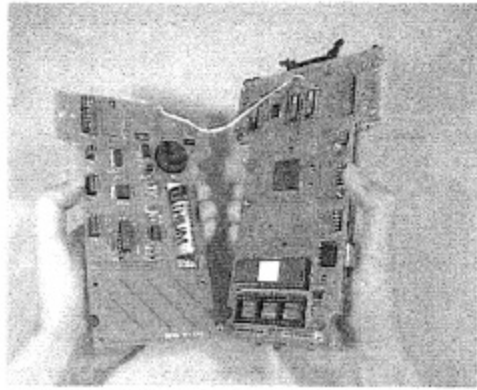
7. Remove four screws on the back of the circuit board with the Phillips screwdriver.



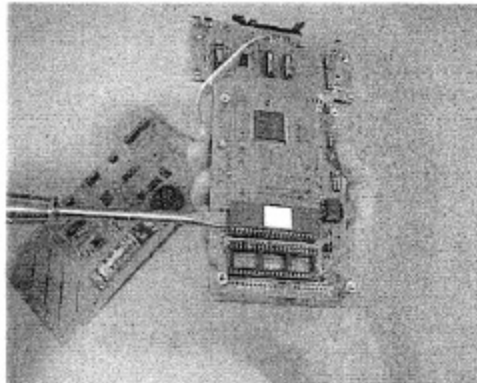
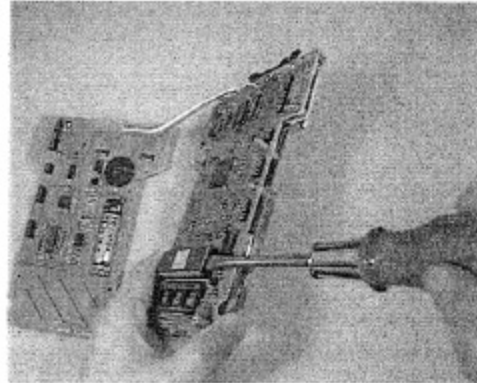
8. The two circuit board tiers are held together by a series of connectors on one side of the board. Although you do not need tools to separate them (you can wedge fingers between the boards and carefully push the boards apart), this should be done with care to avoid bending the connector holding the two boards together. You can also use a flat screwdriver wedged between the connectors to nudge them apart very gently.



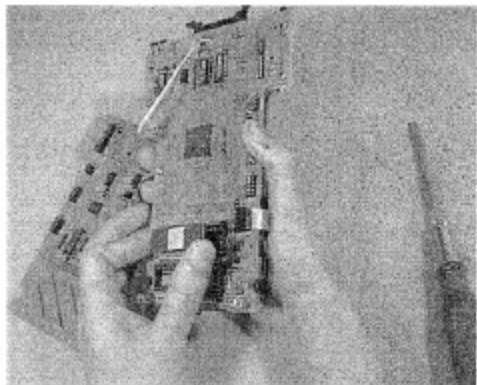
9. Separate the upper and the lower circuit boards.



10. Loosen the old EPROM from the chip socket by using the flat screwdriver to alternately lift the EPROM at both ends using twisting motions.

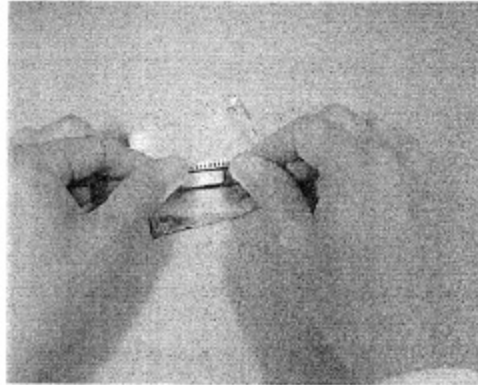
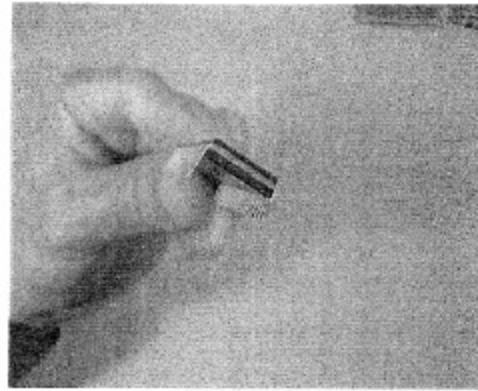


11. Remove the old EPROM.

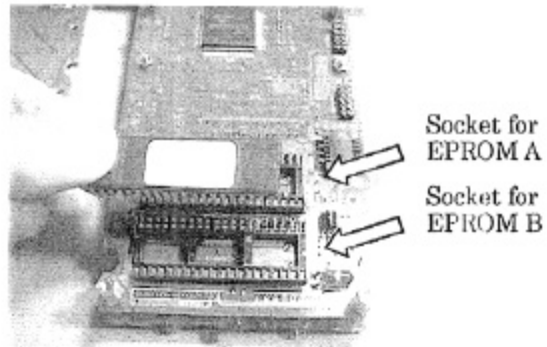
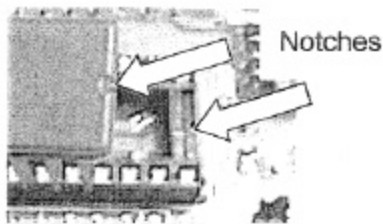


12. The pins on the new EPROM may be slightly spread apart. If they are, straighten them out as follows before inserting them into the chip socket.

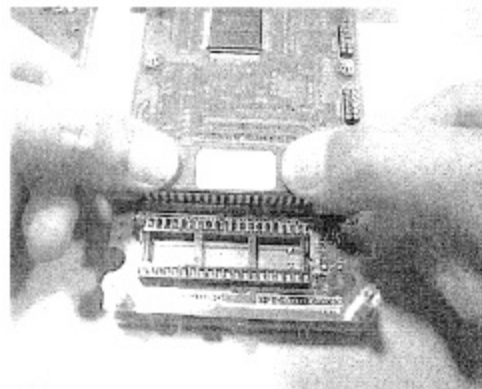
Place a piece of aluminum foil on a flat surface and press the new EPROM against it sideways so that the pins are perpendicular to the chip.



13. Place the new EPROM on the chip socket, making sure that the notches are aligned. Note that SkySensor 2000 has two EPROMs, labeled A and B. Each EPROM goes into the socket as shown in the illustration on the right.



14. Verify that the pins on the first EPROM and the holes on the socket are matched up and press the EPROM evenly and firmly into the chip socket. Then do the same with the second EPROM.



15. Reassemble the controller in the reverse order of the disassembly. (Remember to replace the white plastic spacers from step 6.)

Be careful not to over-tighten the screws (especially the short tap screws), as it is easy to strip the threads on the plastic. (Just tightening it by holding the screwdriver with fingertips will be enough.)

You are done! Connect the controller to the battery, turn on the power, and verify the new ERPOM version number on the display.

